




# Inclusive provision for children with SEND in Early Years

## Easy read – Hearing

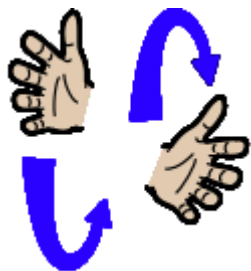


For children with physical and sensory (**hearing**) needs you will do everything you are doing for all children AND –

	Provide a <b>quiet area</b> for 1-1 listening activities
	Make sure the child uses their hearing aid/ <b>equipment</b>
	<b>Follow advice</b> from the Hearing Support Team



Arrange **Fun Time** sessions to teach attention and listening, understanding, speaking and social skills



Teach other ways of **communicating**, e.g. signing, if advised by the Hearing Support Team



Attend **training** e.g. 'Supporting children with hearing loss' run by the Hearing Support Team